


REGENT[®]
HONG KONG

The
SIGNATURE
SUITES



A man and a woman in formal wear are shown in profile, facing each other in a sophisticated interior setting. The woman, on the left, wears a deep red sleeveless dress, a multi-strand pearl necklace, and a matching bracelet. The man, on the right, is dressed in a light-colored suit jacket over a dark shirt. They are standing in front of a dark wall with vertical panels. To the left, a vase with yellow flowers sits on a surface. The overall atmosphere is elegant and intimate.

A TRIO OF ONE-OF-A-KIND, LUXURY RESIDENTIAL RETREATS WITH PRIVATE TERRACE AND UNRIVALLED HARBOURVIEWS

Discover a trio of spectacular luxury residential retreats – each with a private outdoor terrace and whirlpool, unrivalled views of Victoria Harbour and the dazzling Hong Kong skyline.

Home to a myriad of Personal Havens, each exclusive suite is enhanced by bespoke service “on your terms”.



Signature Suite HALLMARKS

Private Rooftop Terraces

With sweeping views overlooking Victoria Harbour, each Signature Suite has an expansive private terrace, outdoor whirlpool and spacious lounge and dining areas.

Mesmerising Harbourviews

Enthralling framed views transform throughout the day.

From these exclusive vantage points, the mesmerising cinematic show on Victoria Harbour never ceases to amaze.

Personal Havens

Enveloped in the majesty and awe of Victoria Harbour, discover a sense of serenity in intimate spaces crafted for indulgent moments.

Bespoke Service on Your Terms

Be privy to around-the-clock personalised service “on your terms” by dedicated Regent Masters who curate moments that become treasured memories.



PRESIDENTIAL SUITE

*Experience one of the world's most spectacular hotel suites
and rooftop penthouses.*



PRESIDENTIAL SUITE

Rooftop Terrace

On your private 2,500 square foot terrace, serene mornings morph into mesmerising evenings as Victoria Harbour transforms from dawn til dusk.

Infinity pool

Gaze over the skyline from the infinity swimming pool or relax on the sun deck in total privacy.

Living Room

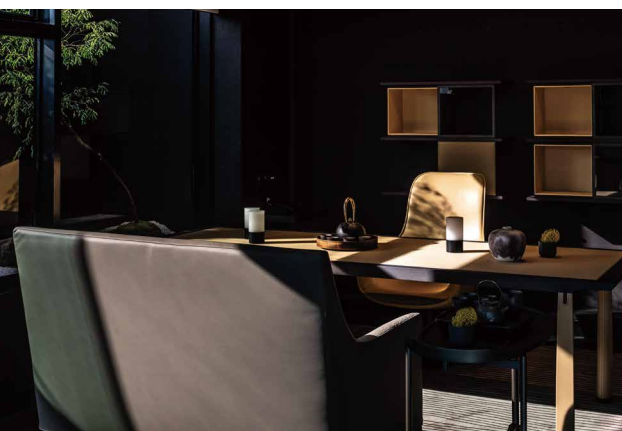
The décor, featuring Chi Wing Lo's contemporary design and subtle Asian influences in the art and accessories, is a showcase of his private collection of custom designed furniture. Inspired by the conviviality of gatherings around a campfire, a floating gas fireplace is built into the custom coffee table as a focal point of the Living Room's spacious lounge area.

Cinematic panoramic views of Victoria Harbour and the Hong Kong skyline take centre stage in the duplex living room.

Dining Room

The dining room features Chi Wing Lo's signature round dining table with recessed turntable (lazy Susan) complemented by his finely stitched leather armchairs to accommodate up to eight guests.

The custom bar counter in the dining room can double for beverage and buffet service (with easy access to the adjoining kitchenette). The harbourview window ledge of the Dining Room, Living Room and Master Bedroom feature Chi Wing Lo's Bronze Garden, each with a bespoke stone sculptural maze and handcrafted bronze bonsai by local artisans COXPER.



Tea Room

A tea room showcasing the art of Chinese tea culture is designed as a versatile Personal Haven. Here wedding couples can honour their parents during the traditional Chinese tea ceremony. With a window overlooking a small Zen garden with bonsai, it is also a Personal Haven for contemplation, work or intimate dining.

PRESIDENTIAL SUITE

Master Bedroom

From the windowfront daybed of the Master Bedroom, soak in the cinematic view.

Master Oasis Bathroom

Pampering and rejuvenation await in the spacious Oasis Bathroom with a harbourview whirlpool, rain forest shower and private toilet room, in addition to the private sauna and steam room.

Oasis Bath

Tranquil and serene, the Oasis Bath is a soothing escape, elevated above the noise of the city, while enveloping you in its majesty.

Connecting Rooms

In addition to the Master Bedroom, four outer-connecting bedrooms create a 5-bedroom suite.





PRESIDENTIAL SUITE

Terrace - Private Events

From an intimate dinner party to a glamorous soirée, the private terrace is a magical setting for unforgettable evenings that create lasting memories.

PRESIDENTIAL SUITE

1. Entrance
2. Guest Bathroom
3. Kitchen
4. Dining Room
5. Living Room
6. Infinity Pool
7. Rooftop Terrace
8. Tea Room
9. Gym Room
10. Staircase
11. Master Bedroom
12. Master Oasis Bathroom

Connecting Rooms

In addition to the Master Bedroom, four outer-connecting bedrooms create 5-bedroom suite.



2D FLOOR PLANS

FIRST FLOOR



GROUND FLOOR



VICTORIA HARBOUR

TERRACE SUITE

A Luxurious Duplex Residential Retreat Overlooking Victoria Harbour.





DINING ROOM

TERRACE SUITE

Living Room & Dining Room

The spacious living room and dining area are Personal Havens for lavish entertaining or intimate gatherings.

Entertainment Room

The adjoining entertainment room is perfect setting for pre-wedding mahjong and other table games.

Staircase

Ascend your personal staircase and discover the ultimate Personal Haven - a stunning Master Bedroom and Oasis Bathroom with majestic views of Victoria Harbour.

Connecting Rooms

In addition to the Master Bedroom, three outer-connecting bedrooms create a 4-bedroom suite.



STAIRCASE

TERRACE SUITE

Make-up Table

In your spacious retreat, savour precious moments and emerge as the best version of yourself.

Dressing Area

Discover the perfect setting for the bride and bridesmaids to prepare for a wedding ceremony on the terrace below.

Private Terrace

As the sun rises over the harbour, watch the city awaken from your exclusive perch atop the hotel.

Savour every moment on your private rooftop terrace – from a soothing dip in the whirlpool as you spot landmarks on the skyline to a romantic evening set against the backdrop of Victoria Harbour.

With sweeping harbourviews, the 3,330 sq. ft. Terrace Suite is ultimate venue for special occasions, exclusive events or romantic interludes.

DRESSING AREA

Oasis Bath

Find serenity, immersed in your Oasis Bath with sweeping views of Victoria Harbour.



TERRACE SUITE

1. Entrance
2. Entertainment Room
3. Rooftop Terrace
4. Living Room
5. Dining Room
6. Staircase
7. Oasis Bathroom
8. Master Bedroom
9. Dressing area

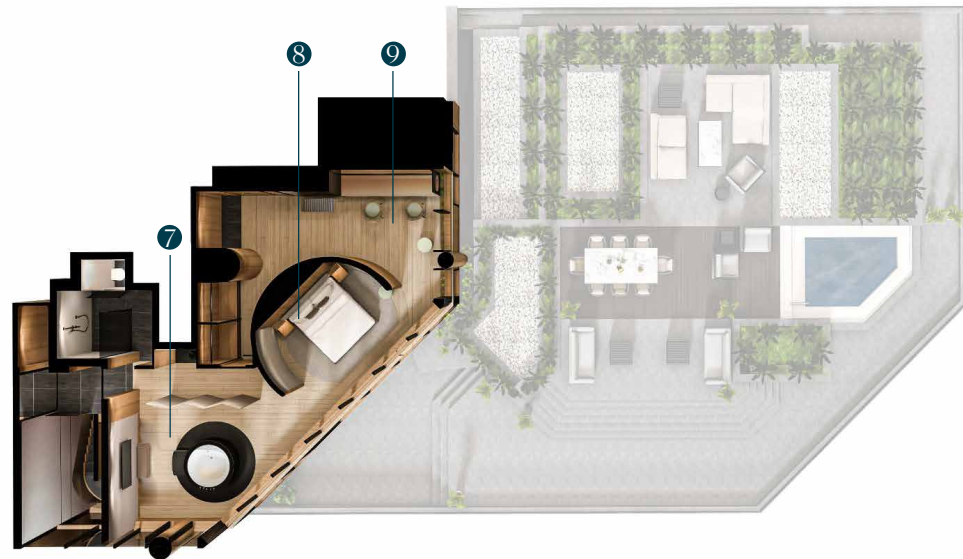
Connecting Rooms

In addition to the Master Bedroom, three outer-connecting bedrooms create 4-bedroom suite.



2D FLOOR PLANS

FIRST FLOOR



GROUND FLOOR



CEO SUITE

Discover a Serene Two-bedroom Residential Retreat with Sweeping Harbourviews.





CEO SUITE

Living Room

The infinity daybed is a Personal Haven for relaxation and convivial conversation while gazing over the city skyline.

Master Bedroom

Savour the view while lounging in bed or on the windowfront daybed with captivating vistas of the harbour and skyline.

Oasis Bathroom

The spacious Oasis Bathroom is a haven for relaxation and rejuvenation with double sinks, a round Oasis Bath and separate shower.

Second Bedroom

Offering privacy for guests-in-residence, a second bedroom with an Oasis Bathroom adjoins the communal living room.



CEO SUITE

Terrace

Watch the sunrise over the harbour from your private terrace. After exploring the city, return to your private terrace and let the hectic pace of the day melt away in the whirlpool, as boats glide atop the silvery waters.

Terrace Evening

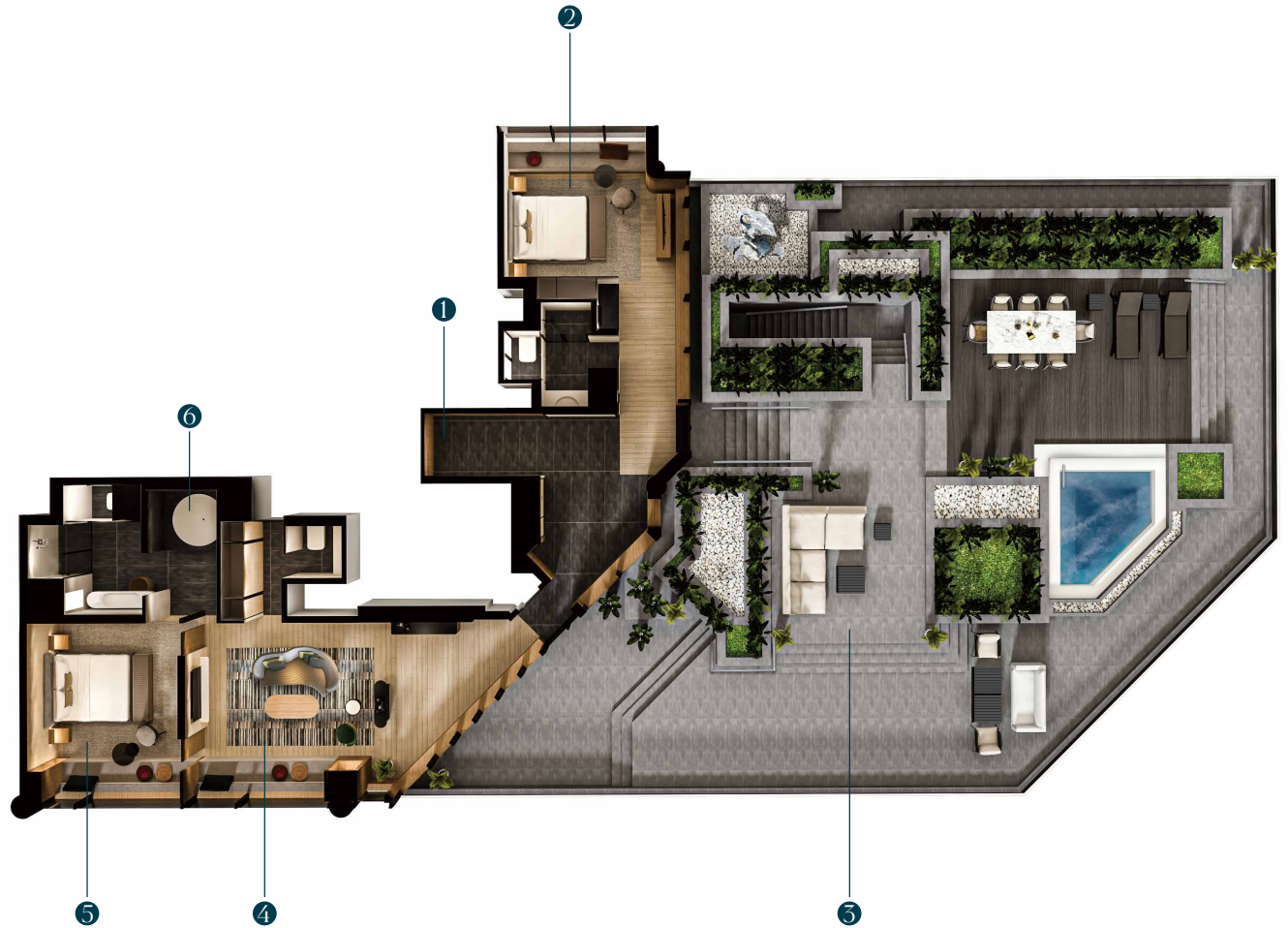
As day melds into nighttime, be mesmerised by the majesty of Victoria Harbour and the city skyline as it morphs into a dazzling display of lights.

Terrace - Special Events

Allow our Regent Masters to transform the 3,200 sq. ft. terrace into a bespoke experience for special occasions - from wedding ceremonies to intimate cocktail parties - with the majesty of Victoria Harbour as the dramatic backdrop.

CEO SUITE

- 1. Entrance
- 2. Second Bedroom
- 3. Rooftop Terrace
- 4. Living Room
- 5. Master Bedroom
- 6. Oasis Bathroom



2D FLOOR PLANS

A woman with dark hair tied back, wearing a vibrant floral dress, is sitting on a wide, light-colored window ledge. She is looking out of a large window at a dense city skyline across a body of water. The skyline features numerous skyscrapers and buildings, with a prominent tower on the right. The water is a calm blue. The scene is brightly lit, suggesting daytime. The text 'SUITE COLLECTION' is overlaid on the right side of the image, and a descriptive sentence is below it.

SUITE COLLECTION

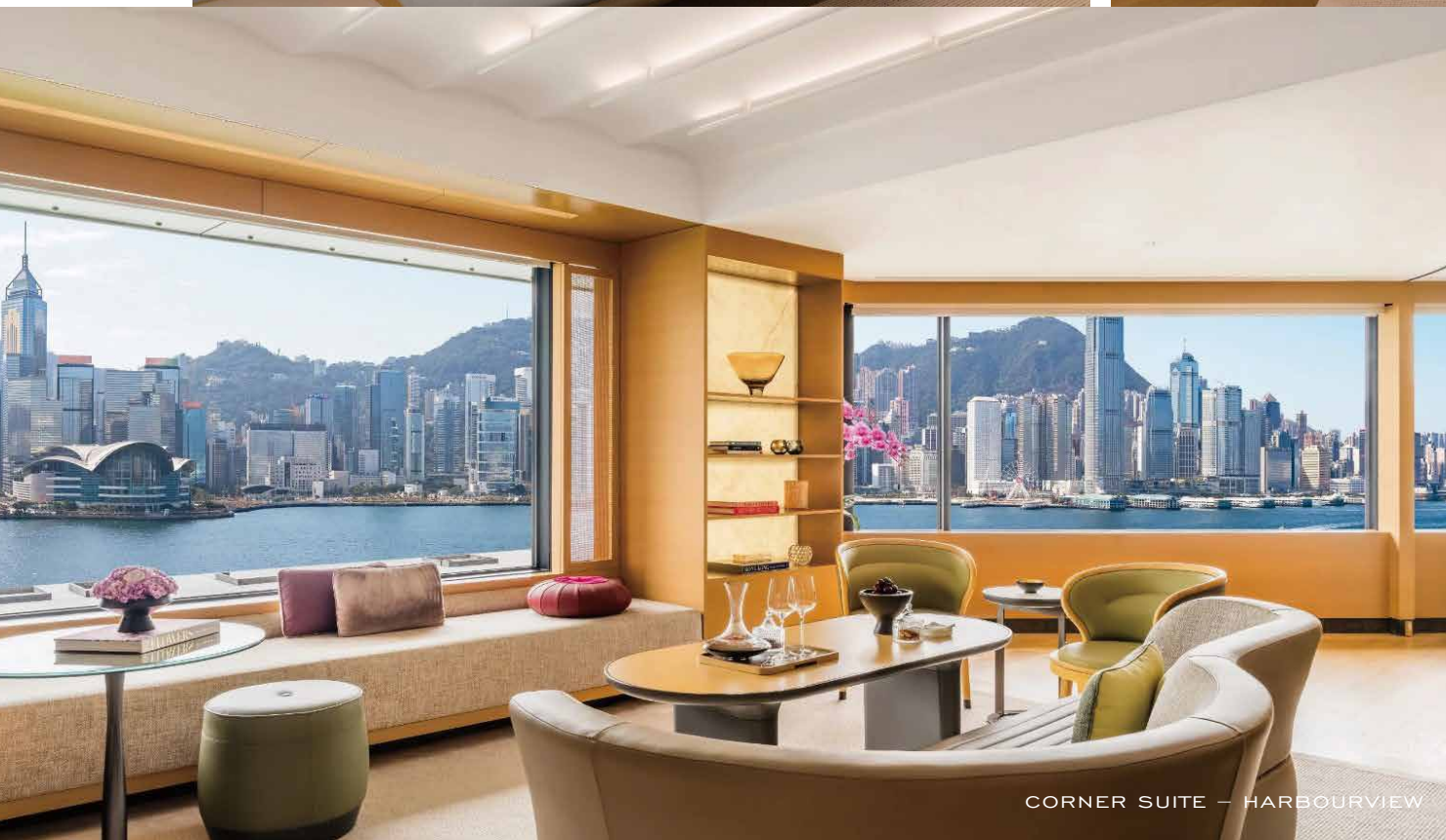
*Each Regent Suite is a residential-style luxury retreat
with a spacious living area and Oasis bathroom.*



SUITE - HARBOURVIEW DAYBED



STUDIO SUITE - HARBOURVIEW



CORNER SUITE - HARBOURVIEW

Alternatively, select from a variety of suite categories (amongst a total of 497 guestrooms). Each residential-style luxury retreat is home to a spacious living area and Oasis bathroom.

While basking in discreet luxury and elevate amenities 'with compliments', be privy to magnificent vistas in Harbourview and Seaview Suites with intimate Private Havens designed for indulgent moments.

REGENT CLUB

An exclusive private sanctuary and luxury residential retreat with bespoke service on your terms.





Opening Hours

Daily from 7:00 am to 10:00 pm

Breakfast:

Monday to Friday
7:00am – 10:30am

Saturday, Sunday and Public Holidays
7:00am – 11:00am

Afternoon Tea:

2:30pm – 4:30pm

Evening Cocktail:

5:30pm – 7:30pm

*Operating hours are subject to change without prior notice.

Location

2/F

Attire

Smart casual: Please refrain from wearing bathrobes, swimwear and slippers.

[VIEW MORE](#)



FROM THE SERENE TO THE SENSATIONAL
Discovery Awaits.

FOR MORE INFORMATION AND RESERVATIONS, PLEASE CONTACT US AT:

ROOM SALES

+852 2313 2075

roomsales.regenthk@ihg.com

EVENTS SALES

+852 2313 2083 / +852 2313 2078

sales.regenthk@ihg.com

WEBSITE

<https://hongkong.regenthotels.com/>

FOR MORE INFORMATION ON OUR SUITES, PLEASE VISIT THE LINK BELOW:

PRESIDENTIAL SUITE

<https://hongkong.regenthotels.com/rooms-suites/signature-suites/presidential-suite>

TERRACE SUITE

<https://hongkong.regenthotels.com/rooms-suites/signature-suites/terrace-suite/>

CEO SUITE

<https://hongkong.regenthotels.com/rooms-suites/signature-suites/ceo-suite/>

SUITE COLLECTION

<https://hongkong.regenthotels.com/rooms-suites/suite-collection/>



18 SALISBURY ROAD, KOWLOON, HONG KONG

+852 2721 1211 ♦ REGENT.HONGKONG@IHG.COM ♦ HONGKONG.REGENTHOTELS.COM

 [@HONGKONGREGENT](https://www.facebook.com/HONGKONGREGENT)

 [@HONGKONGREGENT](https://www.instagram.com/HONGKONGREGENT)

 [REGENTHONGKONG](https://www.linkedin.com/company/REGENTHONGKONG)

 [@REGENTHONGKONG](https://www.youtube.com/@REGENTHONGKONG)